



Assembly

BUILDING

CITYBUILDING

DEWALT

DEWALT

**Job Pack**

**enable  
works**

# Our values

Our values guide us in everything we do

1

## Ambition

We set ambitious goals and high standards for ourselves. We strive to improve the lives and experiences of the communities we serve

2

## Challenge

*We challenge the status quo when there is a better way.*

3

## Impact

We focus all our efforts on impact and outcomes for the people and communities we serve.

5

## Integrity

We make the right decisions, not the easy ones

4

## Equity

We believe everyone has the right to live in a fair and equal society.

The logo for Enable Works, featuring a stylized white 'Q' icon on the left and the text 'enable works' in a bold, white, sans-serif font on the right, all contained within a large, vibrant pink circle.

**enable  
works**



# enable works

We believe that every person in Scotland has the **right** to work in a job that is high **quality** and **well paid**.

**Enable Works** supports over **5500** people every year across 28 Scottish Local Authorities to learn **skills** for **work**.

We meet clients in a variety of settings including in **schools** and **universities** and out in the **community**.

We **partner** with thousands of employers to create **inclusive** cultures and improve the **diversity** of Scotland's workforce.

Together we will **challenge perceptions** of disability and **unleash potential**.



# Why are we needed?

Disabled people experience **significant barriers** to employment and are **underrepresented** in Scotland's **workforce**.

The **Disability Employment Gap** refers to the difference in employment rates between disabled people and the rest of the working age population. The disability employment gap in Scotland is currently **31.2%**, the **biggest** in the **UK**. For someone who has a **learning disability** the gap is even bigger – **75.1%**

But even when in work, disabled people still experience disadvantage and for every pound a non-disabled person earns in work, a disabled person earns **just 83p**.

**It's not good enough and we want to change it.**

**Success** to us means everyone **who can** and **wants to work** has the right support and opportunities that **enables** them to **thrive** and live a **good life**.

# What we do



# Our commitment to Equity, Diversity and Inclusion

We don't just accept difference, we wholly **support** it and **celebrate** it. Achieving **diversity in the workplace** is a **priority** at Enable Works.

Our **culture** is one of our **greatest assets** and it's important to us that we **recognise** and **value** each other's differences and treat each other **fairly** and with **respect**. We create a space where you can bring your **authentic self** to work and we **foster a culture** where you can **challenge, grow** and **learn** from each other.

*"At Enable Works there is respect and understanding at all levels of the business and we are empowered and encouraged to take ownership for our roles, and helped to develop"*

**Employment Coordinator**

We want our team to reflect the **communities we serve** and our **shared ambitions** for our clients. We are a team of **people who support people** to achieve their goals and aspirations.

We offer **flexible working practices** that promote a **strong work/life balance** so that when you are at work you can be the **best version of you**.

**Values are more important to us than qualifications or experience, so if you don't think you meet every requirement that's ok, we still want to hear from you.**

At Enable Works we are **dedicated** to building a **diverse** and **inclusive** workplace, so if you are **excited** about this role but your past experience doesn't align perfectly, we **encourage you to apply** anyway. You may be the right candidate for this role, or other roles.

# Our commitment to you

We want you to be able to perform **the best you possibly can** be through the interview process and be able to fully **demonstrate your skills** and **suitability** for the role.

We want to **get to know you** and see if you're a **good fit** for the job- it's not to catch you out!

***We offer all candidates the interview questions ahead of time so you can prepare your answers in advance- we genuinely want you to do well and to hear your best answers, it's not a memory test!***

We encourage you to **speak to us** about any **accommodations, adjustments** or **support** you may need to the interview process.

Some **examples** of adjustments we have provided include:

- **Offering a choice of face to face interview or online**
- **Changing the time to avoid peak travel or the school drop off**
- **Providing additional time with interview assessments**
- **Having a job coach with you at the interview for support**
- **Offering a practical work trial**
- **Walking interviews**
- **Visit to the venue in advance**

If you **choose** to interview in person, our venues are fully **accessible** and we ensure you can **access them easily** using public transport.

Adjustments can **look different for everyone**- it's also okay if you're **not sure** what you need, speak to us and **we can help**.

# Employment Coordinator

35 hours per week

Permanent

Salary - £27,990

## Role Profile

Your role, as an Employment Coordinator is to provide support to people who have barriers to work to make progress towards and achieve well paid, sustainable employment.

## What will you do?

You will work largely out in the community engaging people face to face. You will work with clients on a one to one and/or group basis to profile their skills and aspirations for work.

You will provide high quality support by:

- Delivering a person centred approach to ensure the right job for the right person
- Work to our tried and tested models of success
- Generate referrals for the programme through partners and community engagement
- Delivering individual opportunities for progression including:
  - Soft Skills training and work experience
  - Accredited qualifications
  - Vocational Skills
- Build and maintain positive relationships with clients and their personal and professional support circles
- Build and cultivate professional relationships with stakeholders and employers to create opportunities for your clients to get the job they want!

Ultimately you will get your client ready and confident to compete for the job they want in the open market

# What will you do?

You will support our ambitions for moving people into work by:

- Meeting regularly with your clients to ensure they are progressing towards their goals
- Support clients to get the best use of our tools and systems including our client portal "Prospects"
- Represent Enable Works at local and national external events
- Engaging with local employers to find opportunities for clients to enter work including work tasters, placements and interviews
- Innovating and collaborating across your team to support the wider Enable Works performance
- Supporting clients into positive destinations including work, training, FE, HE or Modern Apprenticeships
- Providing high quality aftercare support to ensure destinations are sustainable

You will be accountable for:

- Keeping accurate and up-to-date records
- Managing your time and caseload efficiently
- Maintaining internal and external client data systems
- Recording and gathering project information in line with your work plan and timescales
- Handling and storing information in line with Enable Works GDPR and data protection policy
- Reporting accurately on all activity as requested
- Meeting performance expectations including job targets and progressions

Contribution to strategy:

- Sharing best practice and opportunities with your colleagues
- Positive and flexible response to change
- Collaborative approach to team and departmental delivery
- Taking part in our regular staff get togethers and share your experiences, challenges and successes!



# The skills you will bring

## We really need you to have these

- The drive, energy and commitment to support people to obtain high quality, well paid jobs
- Ability to manage your own workload and prioritise as needed
- Confident communicator
- Strong attention to detail
- Professional presentation and personality
- Some knowledge of the local community
- Ability to work with people at any age who have challenging barriers to employment
- IT literacy
- Comfortable working towards targets
- A natural, professional relationship builder
- A full driving licence

## Why?

Our vision is that every person in Scotland is able to access the support they need to find a high quality job that pays them well and your drive and commitment to this job will help them get there. You will recognise each clients individual skills and aspirations and work with them to find a job that they love.

Our culture is autonomous so that means we trust you to make the right decisions for your clients, therefore you need to manage your work load well and be accountable for your time. Attention to detail is important as it means you can work accurately and follow instructions.

# The skills you will bring

Having the confidence to get out and engage people in your local community will be key to the success of your programme. We expect you to source the best opportunities for your clients and this can mean reaching out and making new connections within your community. You will be representing your clients and Enable Works in everything you do so you will need a professional, can do attitude. Our reputation is important to us.

We have high expectations for our clients and you will be given a work plan with targets. We support you throughout but you need to be comfortable working towards them.

## We would love it if you had these

- Understanding of employability services and programmes including Supported Employment
- Understanding of barriers our clients might face when looking for work
- Experience working to strict compliance expectations
- Experience working in a performance focussed team
- Experience of building employer relationships
- Understanding of relevant policy and legislation
- Experience working with ethnically diverse clients



# Our benefits

We believe in **developing** all our staff and we provide an extensive **learning programme** together with **career development** opportunities.

**Examples have included:**

- **Job Specific training including Modern Apprenticeships and Graduate Apprenticeships**
- **PDA in Supported Employment at SCQF Level 7**
- **Leadership Development**
- **Executive MBA**
- **Support with applying for international scholarships**
- **Mentoring with senior leaders**

We also provide time monthly for staff to "**Drop Everything and Learn**" and staff have taken up opportunities to **learn BSL** and **upskill** in new areas of work . We also encourage shadowing and learning across our teams so you can better understand different areas of the business. Your **learning journey** is **driven by you** and **your aspirations** and is fully **supported by us**.

We also have an excellent range of staff benefits including:

- Health cash plans providing a wide range of health benefits to help people cover the cost of their everyday health care.
- Employee Assistance Programme
- Blue Light Card
- Cycle to Work Scheme
- Season Ticket Loans

## Education



Stepping Up



Breaking Barriers

## Employability and Skills

Skills for Work



Increased aspiration



Health and Wellbeing



Client



Community Based



Job searching & CV building

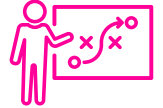


Employer Engagement

## Corporate Support



Expert consultancy



Strategy Development



Executive Coaching



Training

Closing the disability employment gap

High quality, better paid, sustainable jobs

Unleashing the potential of Scotland's workforce